

PASSENGER CAR RADIAL TIRES
LIGHT TRUCK RADIAL TIRES
TRUCK-BUS RADIAL TIRES



Fales Grand



*Transforming
Vision into
Reality...*




Company Profile:

Fales Grand one of the leading international trading companies based in Dubai – U.A.E. with its wholly owned foreign subsidiaries in China, Iraq and Saudi Arabia. Being involved in the Tyre, Tube and Automotive Battery business for last 30 years, Fales Grand Company earned wealth of experience to offer.

Ever since the company was established, we always have been going forward with positive and challenging mind to bring in all best products of China, South Korea to region such as Asia, Middle East, Africa, and European countries.

Our mission is 'Transforming Vision into Reality' and to achieve this, we aim to provide quality products, strive to keep ourselves up-to-date in technologies and resolutions that meet all generation requirements.



At the pinnacle our priority is to foster our customer's profitability by serving private OEM brands, exclusive selling-rights at very competitive prices, full range of point-of-sale materials.

Developing a Corporate Culture that enhances the value of our business, expand opportunities for the growth of an objective to provide easy access to our products and services round the clock.

We assure on basis of our past experience and the products we have will always satisfy your need. We would like to say that **"to have one time business with us will lead you to become our life time business partner"**.

*"to have **one time** business with us will lead you to become our **life time** business partner".*

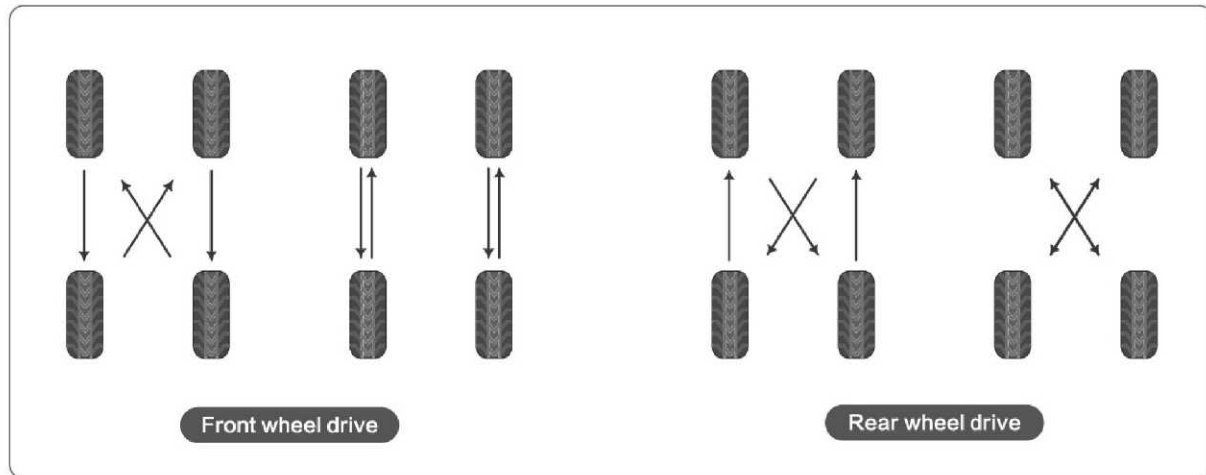
TIRE MANAGEMENT

TIPS

When detecting the abnormal wear of tire, the tire must be replaced immediately, every 10000 km tire transposition.
Special attention should be paid to the snow tire.

THE ADVANTAGES OF TIRE TRANSPOSITION

1. Prevent abnormal wear and life extension of the tire.
2. Detect tire damage caused by vehicles in use.
3. Improve the ride comfort and safety.

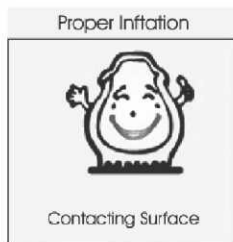


INFLATION PRESSURE

The best inflation pressure is one of the most important aspects of the protection of the tire.

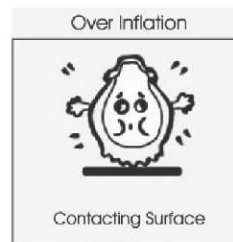
The internal pressure due to tire tread uniform ground contact, and prevent abnormal wear.

Rolling resistance by reducing, and quickly spread the heat generated, so that the internal heat levels are maintained at a stable level.



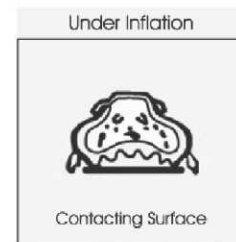
THE CORRECT PRESSURE

The appropriate pressure, can ensure the tire in the running process of the best ground, prolong the service life of the tire.



THE PRESSURE IS TOO LARGE

The tire more easily influenced by external factors in the process of moving (pits, and other debris). Speed the wear of the tread center part.



INSUFFICIENT AIR PRESSURE

Fever injury caused by the lateral excessive bending of the sidewall, and cause the abnormal wear of the tire shoulder. Rolling resistance increased, reduced the fuel economy of the vehicle.



SPIN

• QUIET • ECONOMY • COMFORT

Knife-shaped groove pattern cuts off the water film and air flow; anti-wet and low noise.
Optimised carcass outline design for driving quiet comfort.
Formula with silicon ensures environment friendly requirement and avoids hydroplaning.

Tire Size	Load Index	Speed Rating	Load Range	Section Width (mm)	Overall Diameter (mm)	Tread Depth (mm)	Std. Rim (mm)	Standard Pressure (Kpa)
• 215/60R16	99	H	XL	221	664	7.5	6.5J	340
205/55R16	91	V	SL	214	632	7.5	6.5J	300
• 205/60R16	92	H	SL	209	652	7.5	6.0J	300
195/55R16	87	V	SL	206	620	7.5	6.0J	300

• 205/70R15	96	T	SL	209	669	7.5	6.0J	300
205/60R15	95	H	XL	209	627	7.5	6.0J	340
205/65R15	94	H	SL	209	647	7.5	6.0J	300
• 195/55R15	85	H	SL	201	595	7.5	6.0J	300
195/65R15	91	V	SL	201	635	7.5	6.0J	300
195/60R15	88	H	SL	201	615	7.5	6.0J	300
• 195/50R15	86	H	XL	201	577	7.5	6.0J	340
185/60R15	88	H	XL	189	603	7.5	5.5J	340
• 185/65R15	88	H	SL	189	621	7.5	5.5J	300
185/55R15	82	H	SL	194	585	7.5	6.0J	300
175/65R15	88	H	XL	177	609	7.5	5.0J	340

205/70R14	95	T	SL	209	644	7.5	6.0J	300
195/60R14	86	H	SL	201	590	7.5	6.0J	300
185/60R14	82	H	SL	189	578	7.5	5.5J	300
185/65R14	86	H	SL	189	596	8.0	5.5J	300
• 185/70R14	88	T	SL	189	616	7.5	5.5J	300
175/65R14	82	H	SL	177	584	7.5	5.0J	300
• 175/70R14	84	T	SL	177	602	7.5	5.0J	300
165/60R14	79	T	XL	170	554	7.2	5.0J	340
165/65R14	79	T	SL	170	570	7.8	5.0J	300
165/70R14	81	T	SL	170	588	7.2	5.0J	300
155/65R14	75	T	SL	157	558	7.2	4.5J	300

• 185/70R13	86	T	SL	189	590	7.5	5.5B	300
175/70R13	82	T	SL	177	576	7.5	5.0B	300
175/60R13	77	T	SL	177	540	7.5	5.0B	300
165/70R13	79	T	SL	170	562	7.5	5.0B	300
165/65R13	77	T	SL	170	544	7.2	4.5B	300
155/70R13	75	T	SL	157	548	7.2	4.5B	300
155/65R13	73	H	SL	157	532	7.2	4.5B	300

• Under Production



TERRAIN ||||

• QUIET • HANDLING • SAFE • COMFORT

Streamline small groove design, low noise, quiet and comfortable. Narrow distance between patterns is designed to deliver even wear and extend tire life. Combination of center rib and kerf helps change the tread rigidity and improve ride comfort.

Tire Size	Load Index	Speed Rating	Load Range	Section Width (mm)	Overall Diameter (mm)	Tread Depth (mm)	Std. Rim (mm)	Standard Pressure (Kpa)
215/55ZR17	98	W	XL	226	668	8.0	7.0J	340
215/50ZR17	95	W	XL	226	648	8.0	7.0J	340
• 215/45ZR17	91	W	XL	213	626	8.0	7.0J	340
215/65R17	99	H	SL	221	712	8.0	6.5J	300

225/60R16	98	H	SL	228	676	8.0	6.5J	300
225/55R16	99	V	XL	233	654	8.0	7.0J	340
• 215/70R16	100	H	SL	221	708	8.0	6.5J	300
215/65R16	98	H	SL	221	686	8.0	6.5J	300
215/60R16	95	V	SL	221	664	8.0	6.5J	300
215/55ZR16	97	W	XL	226	642	8.0	7.0J	340
205/60R16	92	V	XL	209	652	8.0	6.0J	300
205/55R16	91	V	SL	214	632	8.0	6.5J	300

215/65R15	96	V	SL	221	661	8.0	6.5J	300
205/65R16	94	H	SL	209	647	8.0	6.0J	300
195/65R16	91	H	SL	201	635	8.0	6.0J	300
195/60R15	88	H	SL	201	615	8.0	6.0J	300
195/55R15	85	V	SL	201	595	8.0	6.0J	300
195/50R15	82	V	SL	201	577	8.0	6.0J	300
185/65R15	88	H	SL	189	621	8.0	5.5J	300
185/60R15	84	H	SL	189	603	8.0	5.5J	300

185/65R14	86	H	SL	189	596	7.5	5.5J	300
185/60R14	82	H	SL	189	578	7.5	5.5J	300
175/70R14	84	T	SL	177	602	7.5	5.0J	300

• Under Production





HOVER^R

• HANDLING • WET GRIP • QUIET • SAFE

The formulation system which applies modified -NdBR and chain end-modified SSBR, can effectively reduce rolling resistance during driving. The fine-grained steel sheet design ensures the uniform wear and softening tread hardness, improving the driving comfort. FEA simulation technology is used to optimize the pitch order and reduce the rolling noise.

Tire Size	Load Index	Speed Rating	Load Range	Section Width (mm)	Overall Diameter (mm)	Tread Depth (mm)	Std. Rim (mm)	Standard Pressure (Kpa)
215/55R17	94	V	SL	226	668	8.0	7.0J	300
215/50R17	95	V	XL	226	648	8.0	7.0J	340
205/50R17	89	V	SL	214	638	8.0	6.5J	300

• 215/65R16	102	H	XL	221	686	8.0	6.5J	340
215/60R16	99	H	XL	221	664	7.5	6.5J	340
215/55R16	97	V	XL	226	668	8.0	7.0J	340
• 205/65R16	95	H	SL	209	672	7.5	6.0J	300
205/60R16	92	H	SL	209	652	7.5	6.0J	300
205/55R16	91	V	SL	214	632	7.5	6.5J	300
195/60R16	89	V	SL	201	640	8.0	6.0J	300
195/55R16	87	V	SL	201	620	8.0	6.0J	300
215/70R15	98	S	SL	221	683	8.0	6.5J	300
205/65R15	94	H	SL	209	647	7.5	6.0J	300
195/65R15	91	H	SL	201	635	7.5	6.0J	300
195/60R15	88	H	SL	201	615	7.5	6.0J	300
195/55R15	85	H	SL	201	595	7.5	6.0J	300
185/65R15	88	H	SL	189	621	7.7	5.5J	300
185/60R15	84	H	SL	189	603	7.5	5.5J	300
175/65R15	88	H	XL	177	609	7.5	5.0J	340

195/60R14	86	H	SL	201	590	7.5	6.0J	300
185/65R14	86	H	SL	189	596	7.5	5.5J	300
185/60R14	82	H	SL	189	578	7.5	5.5J	300
175/70R14	84	T	SL	177	602	7.5	5.0J	300
175/65R14	82	H	SL	177	584	7.5	5.0J	300

• Under Production



VORTEX

• QUIET • ECONOMY • COMFORT • WET GRIP

Tiny blocks with high density are designed to reduce noise due to tire vibration and help provide more comfortable and quiet ride experience. Combination of center rib and kerf helps change the tread rigidity and improve ride comfort. Lightweight profile design and application of new reinforced materials can decrease tire weight by 8%, which also help save fuel and protect environment.

Tire Size	Load Index	Speed Rating	Load Range	Section Width (mm)	Overall Diameter (mm)	Tread Depth (mm)	Std. Rim (mm)	Standard Pressure (Kpa)
225/40ZR18	92	W	XL	230	637	7.7	8.0J	340

225/45ZR17	94	W	XL	225	634	7.7	7.5J	340
------------	----	---	----	-----	-----	-----	------	-----

215/60R16	95	H	SL	221	664	7.7	6.5J	300
• 205/55R16	94	V	XL	214	632	7.5	6.5J	340

• 205/65R15	94	H	SL	209	647	7.7	6.0J	300
• 195/65R15	91	V	SL	201	635	7.7	6.0J	300
• 195/60R15	88	H	SL	201	615	7.7	6.0J	300
185/65R15	88	H	SL	189	621	7.7	5.5J	300

205/70R14	98	T	XL	209	644	7.7	6.0J	340
• 195/70R14	91	T	SL	201	630	7.7	6.0J	300
185/70R14	88	T	SL	189	616	7.7	5.5J	300
• 185/65R14	86	T	SL	189	596	7.7	5.5J	300
185/60R14	82	T	SL	189	578	7.7	5.5J	300
• 175/65R14	82	T	SL	177	584	7.7	5.0J	300

185/70R13	86	T	SL	189	590	6.8	5.5J	300
• 175/70R13	82	T	SL	177	576	6.8	5.0J	300
165/70R13	79	T	SL	170	562	6.8	5.0J	300
• 165/65R13	77	T	SL	170	544	6.8	5.0J	300

• Under Production



FLASH

• HANDLING • QUITE • SAFE • COMFORT • WET GRIP

AFB silencing block design in the groove can break the natural frequency of air flow and reduce the noise. Pore-free sidewall design without bumps for nice appearance. The unique design of "water-absorber" increased the absorption capacity of water on the ground and improves the driving stability of vehicles in straight lines and curves on wet slippery road.

Tire Size	Load Index	Speed Rating	Load Range	Section Width (mm)	Overall Diameter (mm)	Tread Depth (mm)	Std. Rim (mm)	Standard Pressure (Kpa)
245/45R19	102	W	XL	243	703	8.0	8.0J	340
245/40ZR19	98	Y	XL	248	679	8.0	8.5J	340
245/35ZR19	93	Y	XL	248	655	8.0	8.5J	340
235/55R19	105	V	XL	245	741	8.0	7.5J	340
235/50ZR19	103	W	XL	245	719	8.0	7.5J	340
235/40ZR19	96	Y	XL	241	671	8.0	8.5J	340
235/35ZR19	91	Y	XL	241	647	8.0	8.5J	340
225/45ZR19	96	W	XL	225	685	8.0	7.5J	340
225/40ZR19	93	Y	XL	230	663	8.0	8.0J	340
225/35ZR19	88	Y	XL	230	641	8.0	8.0J	340
215/35ZR19	85	W	XL	218	633	8.0	7.5J	340
275/40ZR18	103	Y	XL	278	677	8.0	9.5J	340
265/40ZR18	101	Y	XL	271	669	8.0	9.5J	340
265/35ZR18	97	Y	XL	271	643	8.0	9.5J	340
255/55R18	105	V	SL	265	737	8.0	8.0J	300
255/45ZR18	103	W	XL	255	687	8.0	8.5J	340
255/40ZR18	99	Y	XL	260	661	8.0	9.0J	340
255/35ZR18	94	Y	XL	260	635	8.0	9.0J	340
245/45ZR18	100	W	XL	243	677	8.0	8.0J	340
245/40ZR18	97	Y	XL	248	653	8.0	8.5J	340
235/55ZR18	104	W	XL	245	715	8.0	7.5J	340
235/50ZR18	101	W	XL	245	693	8.0	7.5J	340
235/45ZR18	98	W	XL	236	669	8.0	8.0J	340
235/40ZR18	95	Y	XL	241	645	8.0	8.5J	340
225/55ZR18	102	W	XL	233	705	8.0	7.0J	340
225/50ZR18	99	W	XL	233	683	8.0	7.0J	340
225/45ZR18	95	W	XL	225	659	8.0	7.5J	340
225/40ZR18	92	Y	XL	230	637	8.0	8.0J	340
215/45ZR18	93	W	XL	213	651	8.0	7.0J	340
215/40ZR18	89	W	XL	218	629	8.0	7.5J	340
215/35ZR18	84	Y	XL	218	607	8.0	7.5J	340
245/45ZR17	99	W	XL	243	652	8.0	8.0J	340
245/40ZR17	95	Y	XL	248	628	8.0	8.5J	340
235/55ZR17	103	W	XL	245	690	8.0	7.5J	340
235/50ZR17	100	W	XL	245	668	8.0	7.5J	340
235/45ZR17	97	W	XL	236	644	8.0	8.0J	340
225/55R17	97	V	SL	233	680	8.0	7.0J	300
• 225/50R17	94	V	XL	233	658	8.0	7.0J	340
225/45ZR17	94	W	XL	225	634	8.0	7.5J	340
215/55R17	94	V	SL	226	668	8.0	7.0J	300
215/50ZR17	95	W	XL	226	648	8.0	7.0J	340
215/45ZR17	91	W	XL	213	626	8.0	7.0J	340
215/40ZR17	87	Y	XL	218	604	8.0	7.5J	340
205/55ZR17	95	W	XL	214	658	8.0	6.5J	340
205/50R17	89	V	SL	214	638	8.0	6.5J	300
205/45ZR17	88	W	XL	206	616	8.0	7.0J	340
205/40ZR17	84	W	XL	212	596	8.0	7.5J	340
225/55ZR16	99	W	XL	233	654	8.0	7.0J	340
225/50ZR16	96	W	XL	233	632	8.0	7.0J	340
215/55R16	97	V	XL	226	642	8.0	7.0J	340
205/55ZR16	91	V	SL	214	632	8.0	6.5J	300

• Under Production

SPARK

• HANDLING • WET GRIP • QUITE • SAFE

Four longitudinal grooves are engineered to greatly improve the drainage and grip on wet condition, meanwhile, helping deliver impressive handling performance. The inner and outer sides of the contact area are designed with the proportion of 45:55 to help balance the safety in wet condition and the cornering stability. Wider shoulder pattern design to guarantee the stability of longhaul driving or cornering.

Tire Size	Load Index	Speed Rating	Load Range	Section Width (mm)	Overall Diameter (mm)	Tread Depth (mm)	Std. Rim (mm)	Standard Pressure (Kpa)
305/30R26	109	V	XL	313	844	8.0	11.0J	340
305/35R24	112	V	XL	313	824	8.0	11.0J	340
305/45R22	118	V	XL	303	833	8.0	10.0J	340
305/40R22	114	V	XL	313	803	8.0	11.0J	340
265/35R22	102	V	XL	271	745	8.0	9.5J	340
295/35ZR21	103	W	SL	301	739	8.0	10.5J	300
255/40ZR19	100	W	XL	260	687	8.0	8.0J	340

245/50R18	100	V	SL	253	703	8.0	7.5J	300
245/45ZR18	96	W	SL	243	677	8.0	8.0J	300
235/40ZR18	95	W	XL	241	645	8.0	8.5J	340
225/45ZR18	91	W	SL	225	659	8.0	7.5J	300
205/45ZR18	86	W	SL	206	641	8.0	7.0J	340

245/45ZR17	95	W	SL	243	652	8.0	8.0J	300
235/50ZR17	96	W	SL	245	668	8.0	7.5J	300
235/45ZR17	97	W	XL	236	644	8.0	8.0J	340
225/55R17	97	V	SL	233	680	8.0	7.0J	300
225/55RF17	94	V	SL	233	680	8.0	7.0J	300
225/50RF17	94	V	SL	233	658	8.0	7.0J	300
225/45RF17	91	W	SL	225	634	8.0	7.5J	300
225/45ZR17	91	W	SL	225	634	8.0	7.5J	300
215/55R17	94	V	SL	226	668	8.0	7.0J	300
215/50R17	91	V	SL	226	648	8.0	7.0J	300
215/45ZR17	91	W	XL	213	626	8.0	7.0J	340
215/40ZR17	86	W	XL	218	604	8.0	7.5J	340
205/50ZR17	93	W	XL	214	638	8.0	6.5J	340
205/45ZR17	88	W	XL	206	616	8.0	7.0J	340
205/40ZR17	84	W	XL	212	596	8.0	7.5J	340

215/60R16	99	V	XL	221	664	8.0	6.5J	340
215/55R16	97	V	XL	226	642	8.0	7.0J	340
205/60R16	92	V	SL	209	652	8.0	6.0J	300
205/55R16	91	V	SL	214	632	8.0	6.5J	300
• 205/45ZR16	87	W	XL	206	590	8.0	7.0J	340
195/60R16	89	V	SL	201	640	8.0	6.0J	300

195/65R15	91	V	SL	201	635	8.0	6.0J	300
195/60R15	88	H	SL	201	615	8.0	6.0J	300
195/55R15	85	V	SL	201	595	8.0	6.0J	300

• Under Production



THRIVE

• HANDLING • QUIET • ECONOMY • COMFORT • WET GRIP

Herringbone shape steel sheet and reinforcing rib design improves the solid of the tread pattern, and improve braking performance by 5%. Pore-free sidewall design without bumps for nice appearance. Rolling resistance decreased by more than 10%, endurance enhance by 5%. Variable pinch pattern design, prevents the occurrence of resonance between the pattern block; and the noise is reduced by 15%.



Tire Size	Load Index	Speed Rating	Load Range	Section Width (mm)	Overall Diameter (mm)	Tread Depth (mm)	Std. Rim (mm)	Standard Pressure (Kpa)
275/45ZR21	110	W	XL	273	781	8.0	9.0J	340
265/40ZR21	105	W	XL	271	745	8.0	9.5J	340

275/40ZR20	106	W	XL	278	728	8.0	9.5J	340
255/50R20	105	H	SL	265	764	8.0	8.0J	300
245/50R20	102	V	SL	253	754	8.0	7.5J	300
245/45R20	103	V	XL	243	728	8.0	8.0J	340
235/55R20	105	V	XL	245	766	8.0	7.5J	340

255/55R19	111	V	XL	265	764	8.0	8.0J	340
255/50R19	103	V	SL	265	739	8.0	8.0J	300
245/55R19	103	V	SL	253	753	8.0	7.5J	300
235/55R19	105	V	XL	245	741	8.0	7.5J	340
235/50R19	103	V	XL	245	719	8.0	7.5J	340
225/55R19	99	V	SL	233	731	8.0	7.0J	300

285/60R18	116	H	SL	292	799	8.0	8.5J	300
275/65R18	116	H	SL	279	815	8.0	8.0J	300
265/70R18	116	T	SL	272	829	8.0	8.0J	300
265/65R18	114	T	SL	272	801	8.0	8.0J	300
265/60R18	110	H	SL	272	775	8.0	8.0J	300
255/70R18	113	T	SL	260	815	8.0	7.5J	300
255/60R18	112	H	XL	260	763	8.0	7.5J	340
245/60R18	105	H	SL	248	751	8.0	7.0J	300
235/65R18	110	H	XL	240	763	8.0	7.0J	340
235/60R18	107	H	XL	240	739	8.0	7.0J	340
235/55R18	100	V	SL	245	715	8.0	7.5J	300
235/50R18	97	V	SL	245	693	8.0	7.5J	300
225/60R18	100	H	SL	228	727	8.0	6.5J	300
225/55R18	98	V	SL	233	705	8.0	7.0J	300
225/50R18	99	V	XL	233	683	8.0	7.0J	340
215/55R18	95	H	SL	226	693	8.0	7.0J	300

265/65R17	112	T	SL	272	776	8.0	8.0J	300
245/65R17	107	H	SL	248	750	8.0	7.0J	300
• 235/65R17	108	T	XL	240	738	8.0	7.0J	340
235/55R17	103	V	XL	245	690	8.0	7.5J	340
225/65R17	102	H	SL	228	724	8.0	6.5J	300
225/60R17	99	H	SL	228	702	8.0	6.5J	300
215/60R17	96	H	SL	221	690	8.0	6.5J	300
215/55R17	98	V	XL	226	668	8.0	7.0J	340

215/65R16	102	H	XL	221	686	8.0	6.5J	340
-----------	-----	---	----	-----	-----	-----	------	-----

• Under Production



THRUST

• QUIET • HANDLING • WET GRIP • COMFORT

Bonic Leopard claw pattern design improves the handling safety by 10%. Main longitudinal grooves and oblique lateral grooves provide excellent high-speed and drainage performance. Thin grooves help improve stable grip. Semi-closed open shoulder is designed to provide quiet and comfortable ride experience. Design of optical and dynamic sidewall leads fashionable trend.



Tire Size	Load Index	Speed Rating	Load Range	Section Width (mm)	Overall Diameter (mm)	Tread Depth (mm)	Std. Rim (mm)	Standard Pressure (Kpa)
285/50R20	112	H	SL	297	794	8.4	9.0J	300
275/55R20	113	V	SL	284	810	8.0	8.5J	300
265/50R20	111	V	XL	277	774	8.0	8.5J	340
255/55R20	110	V	XL	265	788	8.4	8.0J	340
255/50R20	109	V	XL	265	764	8.0	8.0J	340

255/50R19	103	V	SL	265	739	8.4	8.0J	300
245/55R19	103	V	SL	253	753	8.4	7.5J	300
245/45R19	98	H	SL	243	703	8.4	8.0J	300
235/50R19	103	V	XL	245	719	8.4	7.5J	340

265/60R18	110	H	SL	272	775	8.4	8.0J	300
255/55R18	105	V	SL	265	737	8.4	8.0J	300
235/65R18	110	H	XL	240	763	8.4	7.0J	340
• 235/60R18	107	H	XL	240	739	8.4	7.0J	340
235/55R18	100	V	SL	245	715	8.4	7.5J	300
235/50R18	97	V	SL	245	693	8.4	7.5J	300
225/60R18	100	T	SL	228	727	8.4	6.5J	300
225/55R18	98	V	SL	233	705	8.4	7.0J	300
215/55R18	95	H	SL	226	693	8.4	7.0J	300

275/65R17	115	T	SL	279	790	8.0	8.0J	300
265/70R17	115	H	SL	272	804	8.7	8.0J	300
265/65R17	112	T	SL	272	776	8.4	8.0J	300
245/65R17	107	T	SL	248	750	8.4	7.0J	300
235/65R17	104	T	SL	240	738	8.4	7.0J	300
235/60R17	102	H	SL	240	714	8.7	7.0J	300
235/55R17	103	V	XL	245	690	8.4	7.5J	340
• 225/65R17	102	T	SL	228	724	8.4	6.5J	300
225/60R17	99	H	SL	228	702	8.4	6.5J	300
225/55R17	101	H	XL	233	680	8.4	7.0J	340
215/60R17	100	H	XL	221	690	8.4	6.5J	340
215/55R17	94	V	SL	226	668	8.4	7.0J	300
215/50R17	95	V	XL	226	648	8.4	7.0J	340

275/70R16	114	S	SL	279	792	8.7	8.0J	300
265/70R16	112	H	SL	272	778	8.7	8.0J	300
245/75R16	111	S	SL	248	774	8.7	7.0J	300
245/70R16	107	T	SL	248	750	8.7	7.0J	300
235/70R16	106	T	SL	240	736	8.7	7.0J	300
235/60R16	100	H	SL	240	688	8.4	7.0J	300
225/70R16	103	T	SL	228	722	8.7	6.5J	300
215/70R16LT	108/106	R	8PR/D	221	708	8.7	6.5J	450
215/70R16LT	100/97	R	6PR/D	221	708	8.7	6.5J	350
215/70R16	100	T	SL	221	708	8.7	6.5J	300
215/65R16	102	H	XL	221	686	8.4	6.5J	340
205/65R16	99	H	XL	209	672	8.4	6.0J	340
205/60R16	96	V	XL	209	652	8.4	6.0J	340
205/55R16	94	H	XL	214	632	8.4	6.5J	340
205/55R16	94	V	SL	214	632	8.4	6.5J	340

235/75R15	105	H	XL	235	733	8.7	6.5J	300
225/75R15	102	T	XL	223	719	8.7	6.0J	340
• 215/75R15	100	T	SL	216	703	8.7	6.0J	300

• Under Production



Classic

• HANDLING • ANTI-WEAR • HEAVY LOAD • SAFE

Stronger carcass construction helps effectively improve endurance and loading performance. At the time to enhance tire traction, confident to provide excellent drainage and improve wet-skid resistance. Wider central pattern block provides strong driving performance.

Tire Size	Load Index	Speed Rating	Load Range	Section Width (mm)	Overall Diameter (mm)	Tread Depth (mm)	Std. Rim (mm)	Standard Pressure (Kpa)
7.50R16LT (TT)	120/116	N	12PR/F	215	805	10.0	6.0G	670
7.50R16LT (TL)	120/116	N	12PR/F	215	805	10.0	6.0G	670
7.00R16LT (TT)	115/110	N	12PR/F	200	775	10.0	5.5F	670
7.00R16LT (TL)	115/110	N	12PR/F	200	775	10.0	5.5F	670
6.50R16LT (TT)	107/102	M	10PR/E	185	750	10.0	5.5F	560
6.50R16LT (TL)	107/102	M	10PR/E	185	750	10.0	5.5J	560
6.50R16LT (TT)	110/105	M	12PR/F	185	750	10.0	5.5F	670
6.50R16LT (TL)	110/105	M	12PR/F	185	750	10.0	5.5F	670
205/85R16LT/C	117/115	L	12PR/F	215	805	10.0	6.0J	670
195/85R16LT/C	114/112	L	12PR/F	185	750	10.0	5.5J	670
185/75R16C	104/102	R	8PR/D	184	684	10.0	5.0J	475

195/85R15LT	113/111	L	8PR/D	196	693	10.0	5.5J	450
195R15LT/C	107/105	N	8PR/D	196	693	9.0	5.5J	450
185R15LT	103/102	R	8PR/D	189	677	9.5	5.5J	450

195R14LT/C	105/103	N	8PR/C	196	668	9.0	5.5J	450
• 185R14LT	102/100	R	8PR/D	188	650	9.5	5.5J	450
165R14LT	96/95	R	8PR/D	167	622	7.5	4.5J	450

175R13LT	97/95	R	8PR/D	177	610	8.0	5.0B	450
165R13LT	94/92	S	8PR/D	167	596	7.5	4.5B	450
165/70R13LT	88/86	S	6PR/C	170	562	7.0	5.0B	375
155R13LT	85/83	N	6PR/C	157	578	7.0	4.5B	350

155R12LT/C	88/86	N	8PR/D	157	550	7.0	4.5B	450
------------	-------	---	-------	-----	-----	-----	------	-----

• Under Production



D5801

LIGHT TRUCK TIRE

Shoulder pattern enhances handling safety and comfort, later grooves help provide enhanced traction on both dry & wet grounds.

Size	Ply Rating	Load Index	Speed Rating	Rim	Max Load		Inflation Pressure (KPA)	Inflated Section Width (mm)	Overall Diameter Inflated (mm)	Pattern Depth (mm)
					Single	Dual				
5.50R12LT	10	92/90	P	3.50B	560	530	500	160	595	8.50
5.50R13LT	12	94/92	P	4.00B	670	640	550	160	620	8.50



D5809

LIGHT TRUCK TIRE

Specially designed for light truck and van, providing optimized wet & dry surface performances and high efficiency in preventing side wear. Longer mileage ensures high economies.

Size	Ply Rating	Load Index	Speed Rating	Rim	Max Load		Inflation Pressure (KPA)	Inflated Section Width (mm)	Overall Diameter Inflated (mm)	Pattern Depth (mm)
					Single	Dual				
5.00R12LT	10	88/86	P	3.50B	560	530	550	143	568	9.5





ENIGMA

LIGHT TRUCK TIRE

Sand Patterned / Light Truck and Passenger Car Radial Tires

Size	Ply Rating	Load Index	Speed Symbol	Rim	Max Load		Inflation Pressure (KPA)	Inflated Section Width (mm)	Overall Diameter Inflated (mm)	Tube Type
					Single	Dual				
• 7.50R16LT	8	112/107	M	6.00G	1120	975	460	215	805	TT

• Under Production



FOREFRONT

LIGHT TRUCK TIRE

Semi-Steel Light Truck and Passenger Car Radial Tires

Size	Ply Rating	Load Index	Speed Symbol	Rim	Max Load		Inflation Pressure (KPA)	Inflated Section Width (mm)	Overall Diameter Inflated (mm)	Tube Type
					Single	Dual				
185R14LT	8	102/100	Q	5.50J	850	800	450	189	652	TL
185R15LT	6	98/97	Q	5.50J	750	730	350	189	677	TL
185R15LT	8	103/102	Q	5.50J	875	850	450	189	677	TL
• 195R14LT	8	105/103	Q	5.50J	925	875	450	196	668	TL
• 195R15LT	8	106/104	Q	5.50J	950	900	450	196	693	TL

• Under Production



FR118

LIGHT TRUCK TIRE

Semi-Steel Light Truck and Passenger Car Radial Tires

Size	Ply Rating	Load Index	Speed Symbol	Rim	Max Load		Inflation Pressure (KPA)	Inflated Section Width (mm)	Overall Diameter Inflated (mm)	Tube Type
					Single	Dual				
6.50R15LT	10	106/101	L	5.50F	950	825	560	185	730	TL
6.50R16LT	10	107/102	L	5.50F	975	850	560	185	750	TT/TL
6.50R16LT	12	110/105	L	5.50G	1060	925	670	185	750	TT
7.00R15LT	10	109/105	M	5.50F	1030	935	560	200	750	TT/TL
• 7.50R16LT	14	122/118	L	6.00G	1500	1320	770	215	805	TTF
• 7.50R16LT	14	122/118	L	6.00G	1500	1320	770	215	805	TL

• Under Production



FR520

TRUCK & BUS TIRE

High wear-resisting performance, loading quantity, anti-stung ability, suitable for drive wheels.

Size	Ply Rating	Load Index	Speed Rating	Rim	Max Load		Inflation Pressure (KPA)	Inflated Section Width (mm)	Overall Diameter Inflated (mm)	Pattern Depth (mm)
					Single	Dual				
315/80R22.5	20	156/150	L	9.00	4000	3350	850	312	1076	20



FR580

TRUCK & BUS TIRE

Excellent durability, good ground grasping capacity, low heat generation, suitable for medium and long mileage vehicles running on the paved road with a standard load.

Size	Ply Rating	Load Index	Speed Rating	Rim	Max Load		Inflation Pressure (KPA)	Inflated Section Width (mm)	Overall Diameter Inflated (mm)	Pattern Depth (mm)
					Single	Dual				
12.00R24	20	160/157	K	8.50	4500	4125	900	315	1226	14



FR589

TRUCK & BUS TIRE

Long time service life with the special formula. The gutter on the tread can reduce the noise and heat depression. Suitable for all kinds of position on the trucks loading for middle and long distance on the good road.

Size	Ply Rating	Load Index	Speed Rating	Rim	Max Load		Inflation Pressure (KPA)	Inflated Section Width (mm)	Overall Diameter Inflated (mm)	Pattern Depth (mm)
					Single	Dual				
13R22.5	18	154/151	L	9.75	3750	3450	830	320	1124	16.5



FR682

TRUCK & BUS TIRE

High wear-resisting performance, loading quantity, anti-stung ability, suitable for drive wheels.

Size	Ply Rating	Load Index	Speed Rating	Rim	Max Load		Inflation Pressure (KPA)	Inflated Section Width (mm)	Overall Diameter Inflated (mm)	Pattern Depth (mm)
					Single	Dual				
385/65R22.5	20	160	K	11.75	4500	-	900	389	1072	17



FR716

TRUCK & BUS TIRE

High wear-resisting performance, loading quantity, anti-stung ability, suitable for drive wheels.

Size	Ply Rating	Load Index	Speed Rating	Rim	Max Load		Inflation Pressure (KPA)	Inflated Section Width (mm)	Overall Diameter Inflated (mm)	Pattern Depth (mm)
					Single	Dual				
9.00R20	16	144/142	K	7.00	2800	2650	900	259	1019	15.5
11.00R20	18	152/149	K	8.00	3500	3250	930	293	1085	16.5
12.00R20	18	154/151	K	8.50	3750	3450	900	315	1125	17
12.00R24	20	160/157	K	8.50	4500	4125	900	315	1226	14
13R22.5	18	154/151	L	9.75	3750	3450	830	320	1124	16.5
315/80R22.5	20	156/150	L	9.00	4000	3350	850	312	1076	15



FR721

TRUCK & BUS TIRE

High-performance mixed pattern, suitable for all kinds of complicated road and all positions.

Size	Ply Rating	Load Index	Speed Rating	Rim	Max Load		Inflation Pressure (KPA)	Inflated Section Width (mm)	Overall Diameter Inflated (mm)	Pattern Depth (mm)
					Single	Dual				
12.00R24	20	160/157	K	8.50	4500	4125	900	315	1226	14



FR758

TRUCK & BUS TIRE

High durability, high heat resistance, excellent wear resistance, excellent resistance to eccentric wear, good control stability, excellent horse. Suitable for short and middle distance high-speed buses, trucks, the airport bus, etc. Suitable for the front wheel.

Size	Ply Rating	Load Index	Speed Rating	Rim	Max Load		Inflation Pressure (KPA)	Inflated Section Width (mm)	Overall Diameter Inflated (mm)	Pattern Depth (mm)
					Single	Dual				
315/80R22.5	20	156/150	M	9.00	4000	3350	850	312	1020	15



FR766

TRUCK & BUS TIRE

High wear -resisting performance, loading quantity, anti-stung ability, suitable for drive wheel.

Size	Ply Rating	Load Index	Speed Rating	Rim	Max Load		Inflation Pressure (KPA)	Inflated Section Width (mm)	Overall Diameter Inflated (mm)	Pattern Depth (mm)
					Single	Dual				
385/65R22.5	20	160	K	11.75	4500	-	900	389	1072	16.5



FR880

TRUCK & BUS TIRE

Extra deep tread depth offer excellent traction. Heavy bead design to support heavy load. Suitable for mining & mountain roads.

Size	Ply Rating	Load Index	Speed Rating	Rim	Max Load		Inflation Pressure (KPA)	Inflated Section Width (mm)	Overall Diameter Inflated (mm)	Pattern Depth (mm)
					Single	Dual				
12.00R24	20	160/157	K	8.50	4500	4125	900	315	1226	17

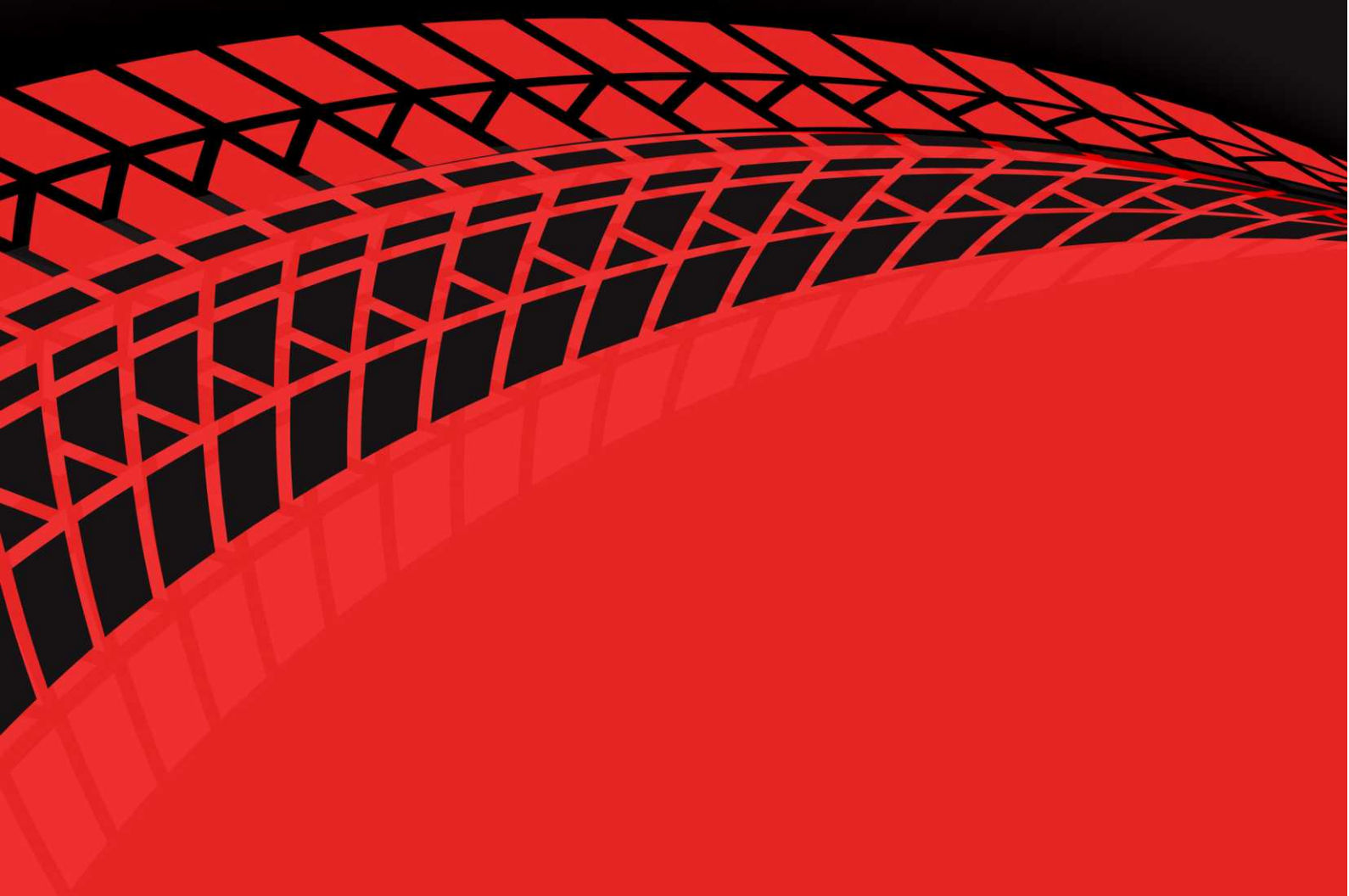


FR899

TRUCK & BUS TIRE

High speed. Excellent load. Excellent sideslip and mud slip resistance. Suitable for medium and short mileage vehicles running on paved road.

Size	Ply Rating	Load Index	Speed Rating	Rim	Max Load		Inflation Pressure (KPA)	Inflated Section Width (mm)	Overall Diameter Inflated (mm)	Pattern Depth (mm)
					Single	Dual				
315/80R22.5	20	156/150	M	9.00	4000	3350	850	312	1076	15



FALES GRAND GENERAL TRADING L.L.C.

DUBAI : +971 4 2288441

CHINA: +86 532 83862113

Email: sales@falesgrand.com

Website: <https://www.falesgrand.com>